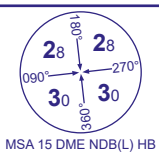
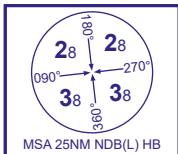
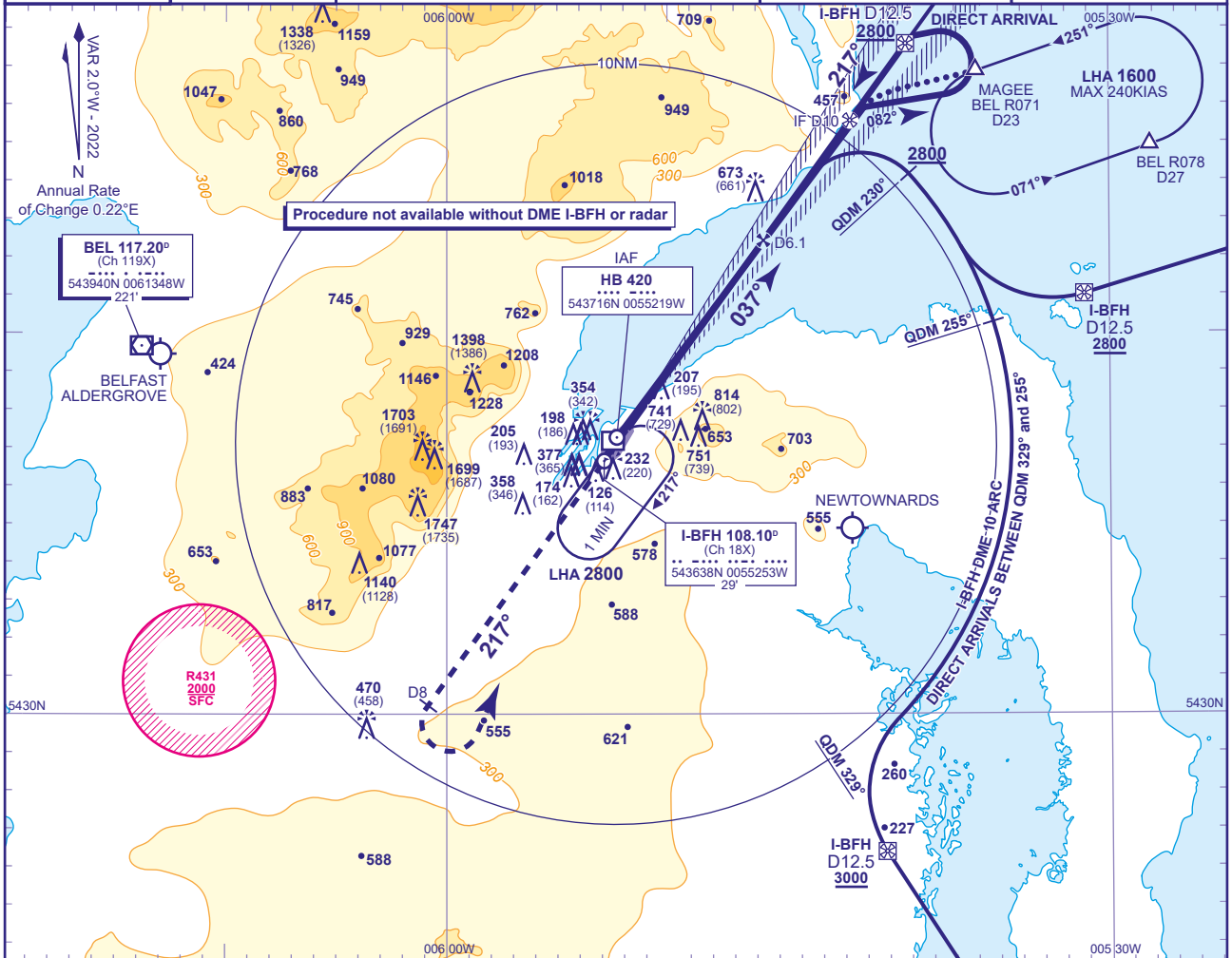


INSTRUMENT APPROACH CHART - ICAO

BELFAST CITY
ILS/DME/NDB(L)
RWY 22
(ACFT CAT A,B,C)APP 130.850
TWR 122.830
RAD 134.800
ATIS 124.580BELFAST APPROACH
BELFAST TOWER
BELFAST RADAR
BELFAST INFORMATIONAD ELEVATION 15
THR ELEVATION 12
OBSTACLE ELEVATION
1744 AMSL
(1732) (ABOVE THR)

BEARINGS ARE MAGNETIC

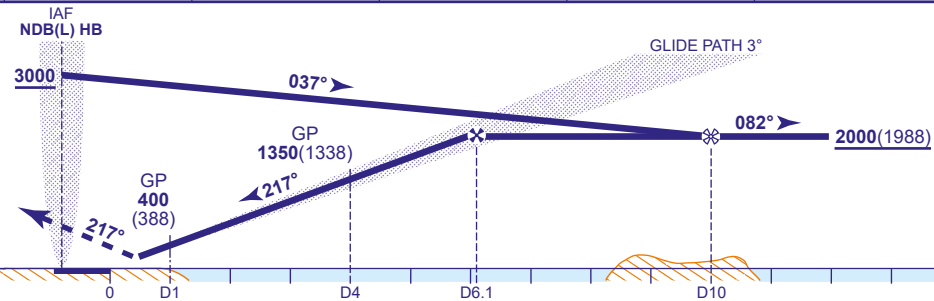
TRANSITION ALTITUDE
6000

RECOMMENDED PROFILE GLIDE PATH 3°, 320FT/NM

DME I-BFH	6	5	4	3	2	1
ALT(HGT)	1990(1978)	1670(1658)	1350(1338)	1030(1018)	720(708)	400(388)

RDH 50

Climb straight ahead to 3000 or I-BFH DME 8 whichever is the earlier then turn left to return to NDB(L) HB to enter the hold at 3000 or as directed.



Aircraft Category		A	B	C	Rate of descent	G/S KT				
OCA (OCH)	CLIMB GRAD 2.5%	598(586)	608(596)	619(607)		160	140	120	100	80
	CLIMB GRAD 3%	175(163)	185(173)	198(186)	FT/MIN	850	740	640	530	420
VM(C)OCA (OCH AAL)		Total Area	1040(1025)	1120(1105)	1800(1785)					
		Southeast of RWY 04/22	1040(1025)	1120(1105)	1230(1215)					

AIRCRAFT UNABLE TO RECEIVE DME I-BFH
Advise ATC. Radar ranges will be provided approaching the FAP and at 4NM and 1NM from the THR on the final approach.

NOTE Direct arrivals available on request to ATC.

CHANGE (1/25): BEL VOR RECALIBRATED. MAGEE HOLD REVISED.